

THE NORFOLK ANGLERS CLUB

WIRELINE

MAY 2020



What's Inside

*****Regular Meeting for May is cancelled*** Everyone stay healthy and safe!**

Fishing Tips: Captain Austin Hayne, *FINAO Sportfishing*, Finding Drum, Bottom and Sight Fishing

Fishing Reports:

- Little Creek/Pretty Lake; Speckled Trout
- Chesapeake Bay/CBBT; Tautog
- Chesapeake Bay/Wrecks; Tautog
- Rudee Inlet; Speckled Trout
- Northwest River; Bowfin

Angler Interest

- Blueline Tilefish season opens May 1st
- NOAA/NMFS implementing Recreational Permitting & Reporting for Tilefish
- Recreational Black Sea Bass Season opens May 29th
- Coastal Virginia Offshore Wind (CVOW) Project Update

Leadership Notes...

Fellow Norfolk Anglers,

We've decided to cancel the regular May meeting. At times like this it's important to focus on what's most important and that's your health and welfare and that of your family.



Our Club has supported the Foodbank of Southeastern Virginia and the Eastern Shore for many years now. I'm sure many families are faced with uncertainty of how long it will take

for things to normalize. Now is a good time to consider helping out those who rely on the Foodbank for assistance with a small donation. For the time being they're not accepting donations of items at their Tidewater Dr location. Visit their website at <https://foodbankonline.org/> for more information and to make a monetary donation.

- Will



On The Cover: Captain Austin Hayne with *FINAO Sportfishing* heading out in his Parker 2320 SL. *FINAO Sportfishing* departs out of Little Creek Inlet. For more information about Captain Hayne and *FINAO Sportfishing* check out their facebook page *FINAOSportfishing*.

With Black and Red Drum season upon us, check out Captain Hayne's Fishing Tips on targeting citation drum in this edition of the *Wireline*.

Meeting

The May meeting has been cancelled

**Important:
May NAC Meeting has been
cancelled!**

Publishers NOTES

Editor:

Wendy Bransom

NorfolkAnglersClubEditor@gmail.com

NAC OFFICERS

President:

Will Bransom

Vice President:

Henry Troutner

Treasurer:

Ned Smith

Secretary:

Ike Eisenhower

Events Coordinator:

Mike Hubert

Assistant Events Coordinator:

Vacant

Guard/Greeter:

Ben Capps

Member at Large:

Alex Perez, Sr.

Webmaster:

Pat Hirsch

pfhirsch@yahoo.com

Contact us at;

NorfolkAnglersClub@gmail.com

Norfolk Anglers Club

P.O. Box 8422

Norfolk, Virginia 23503-0422

NORFOLK ANGLERS



www.NorfolkAnglersClub.com

Norfolk Anglers Club

www.norfolkanglersclub.com

Fishing Tips...

Finding Drum, Bottom and Sight Fishing

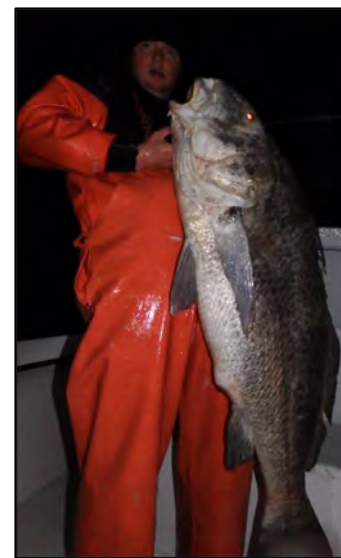
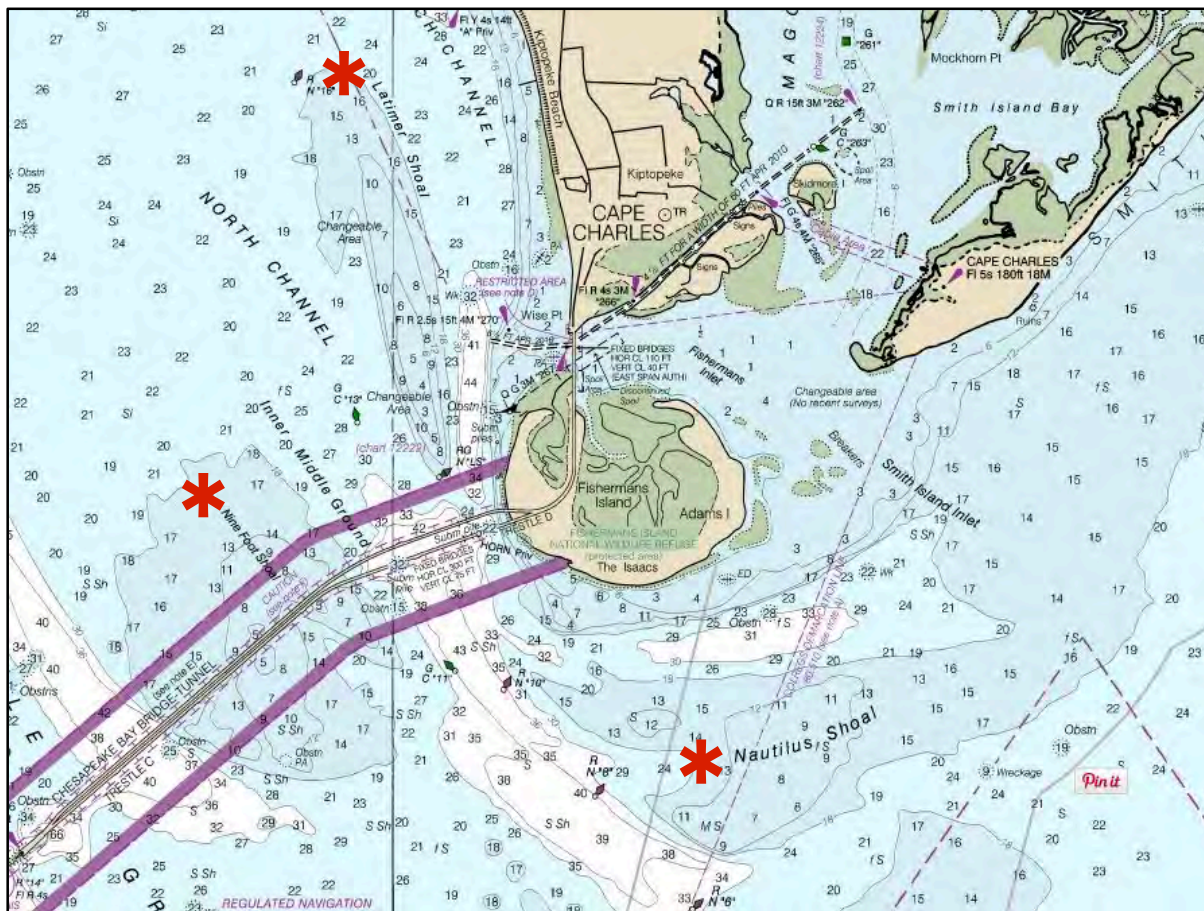
Captain Austin Hayne, FINAO Sportfishing

Spring and the Fall seasons offer the best Drum fishing in Virginia. Many anglers believe the blooming of the Dogwoods in Virginia signals the openings of Drum season. Captain Hayne with FINAO Sportfishing likes to bottom fish the Eastern Shore Breaker early in the season using a variety of bait. Later in the season he'll move off the shoals and switch to sight fishing or bottom fishing around the CBBT.

Bait Fishing - Where and When: Early fishing off the Eastern Shore always brings success. Areas like Nautilus Shoals, Nine Foot Shoals, and Latimer Shoals are the primary areas you'll find boats congregating for large Drum. Drum are looking to forage for food around the edges of the shoals while taking advantage of the warmer water coming off the shallows. Captain Hayne prefers fishing the outgoing tide along the edges of Nautilus Shoals between the 3rd week of May to mid-June to ensure constant Drum action. Later in June he advises the sharks and rays seem to move in the shoals and you're likely to deal with a lot more of that rather than Drum. He advises to be extremely cautious when maneuvering around shoal areas and arrive early enough in the afternoon to assess sea conditions before sunset. Use your chart plotter to plot your entrance and exit from the shoals and always practice safe boating.

Mid-season you'll find Captain Hayne fishing the oceanside of the CBBT sight fishing or bottom fishing. Look for areas where rocks and other structure meet the sand and target those areas. Drum will be foraging along those

boundaries. Don't forget along the ocean front during the late season.



Norfolk Anglers Club

www.norfolkanglersclub.com

Fishing Tips...

FINAO's Bait Fishing Gear: When fishing for Drum, Captain Hayne prefers an Offset 8/0 Gamakatsu Circle Hook snelled to an Ande 80-125# leader. His rigs are a standard Fish Finder Rig using a 8 ounce Pyramid sinker. Pyramid sinkers are necessary to hold bait placement and prevent your rig from rolling around the bottom and becoming hopelessly tangled. His main line is 65# yellow Power Pro and winds onto a Saltist 30 or AvetSX reel. You'll find a medium heavy rod is necessary fight big Drum. Another useful tool to handle big Drum is a Boga Grip or a Lip Gripping tool, especially when reviving them before release.

Sight Casting - Where and When: Early season Cape Henry and the Eastern Shore close to the shoreline are good areas to locate Red Drum. During the summer or late season look for fish marks on your fish finder around the CBBT. Have multiple rods ready to cast into a school of Drum. Both Red and Black Drum congregate in schools and the Red Drum will feed aggressively so casting multiple jigs into the school will provide good results. Approach a school from the rear maintaining a constant slow low engine rpm. Avoid shifting gears, even into neutral, as the noise will spook the school. If they do spook and descend, watch for them to reappear a distance away and retry your approach moving in the same direction as the school. Ideal conditions will have the sun at your back and a south or southwest wind. Make a note of the direction the school is heading as they'll likely continue the same direction. A school of Drum is often described as a large patch of brown water or sand until you get close enough to see the school fish.

Sight Casting Gear: Spinning Reels, like the Saltist Spinner 4000, are the primary method for sight casting Drum. Paired with a medium-heavy 7-9 ft rod, 50# Power Pro, and a 80# Ande Leader complete FINAO's gear. Captain Hayne uses a custom 2 ounce Buck Tail as many of the off-the-shelf jigs lack a strong enough hook to prevent straightening out the hook when fighting a large Drum. Jig color isn't that important as the Drum will hit just about anything put in front of them when they're schooling. What's important is that you can see the jig in the water and can keep working the jig in the top water column where the Drum are.



Norfolk Anglers Club

www.norfolkanglersclub.com

Fishing Tips...

Bottom Fishing Baits: Just about any cut bait will work for bottom fishing Drum. In our Bay waters, Fresh Mullet, Fresh Menhaden and Spot work the best. It's important to remember FRESH is best. Female Blue Crab is another great bait for Drum.

How to prepare your Crab for Bottom Fishing: Captain Hayne advises Female Blue Crab works best for Drum fishing. You can easily pick out the female crabs as the tips of their claws are a red/orange color; male blue crabs have blue claws. Some anglers will use a whole crab when fishing for Drum, FINAO prefers to halve the crab. Captain Hayne tells us it seems to give off more scent in the water and it gives you twice as many baits.

The first step is to remove the claws (Photo 1). Just twist them off and discard. Now comes a decision, shell on or off? Captain Hayne prefers to remove the back shell as it's easier to cut the crab in half and place the hook. Leaving the shell on will prevent the bait from washing out especially if you're fishing in the turbulent water around the shoals. Either shell on or off works for drum fishing. To remove the shell, hold the lower portion of the crab in one hand and pull the top shell off (Photo 2). Next use shears to cut the crab down the middle (Photo 3). You'll now have two crab baits almost ready to fish (Photo 4).

Now take the 8/0 Gamakatsu Circle Hook and insert it through the rear paddle fin knuckle. This is the best location to minimize washout and the strongest location for the hook (Photo 5). If you decide to leave the shell on insert the hook from the underside and up through the hard shell (Photo 6).

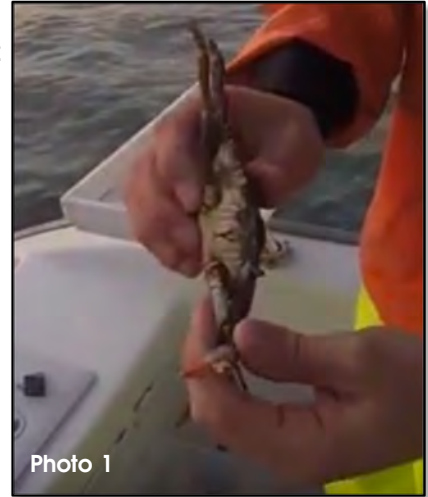


Photo 1



Photo 2



Photo 3

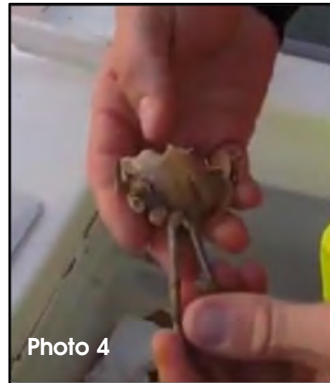


Photo 4

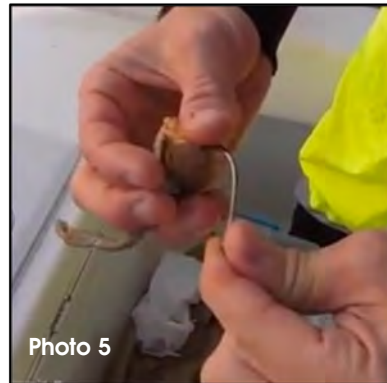


Photo 5



Photo 6



like us on
FinaoSportfishing



follow us on
Finao_Sportfishing



subscribe on
Finao Sportfishing



keep up on
FinaoSportfishing.com



Fishing Reports...



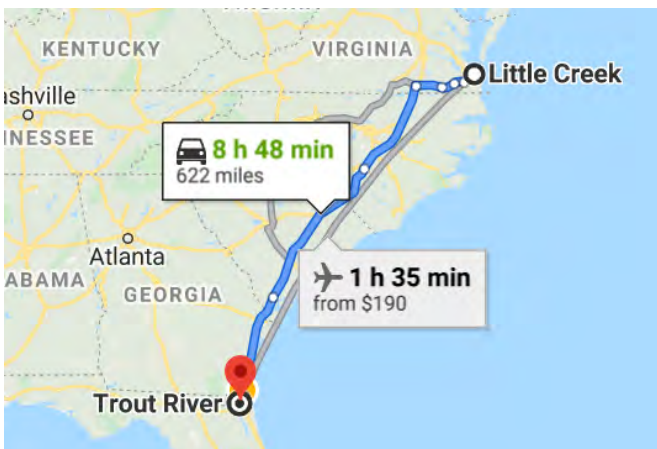
1 April: Louis called me up the night before suggesting we check out Pretty Lake for speckled trout. He had heard they might be here already, he had seen bait on the lake. So, we went, it was cold and 20 plus mph NE winds right before it was to start raining. We tried several places and finally Louis found one, a 17-inch caught on a 27MR Electric Chicken. I couldn't locate one of those so I tried one with pink belly cracked glass and black back and in no time, I had a nice one on. It was 19.75 inches. We tried several other places but went back to the first place where we caught before and then I had a 15-inch one on my silver 27MR. That was enough for Louis to have a dinner and it was feeling colder and sprinkling so we headed for the marina. Water temperature was 61 degrees. It was a great start of the spring season. Two of them had roe in them.
- Dr. James W. Ike Eisenhower



24 April: Bowfin Heaven: I caught 14 at the Northwest River. I used Cookie cutters. The fish were all about the same size. I kept 4 to weigh and threw the others back in the river.
- Jerry Hughes



17 April: I just got a recapture notice today that one of the speckled trout I tagged last fall (October) in Little Creek was just recaptured in Jacksonville, Florida in the Trout River. Now that is one heck of a traveler! It may not be a record but it must be up there somewhere in the record books as it is at least 800 miles to there. I thought you would like to know.
- Tight Lines, Sheldon Arey



**TROUT
7 MONTHS
ABOUT 800
MILES**

7 April: Can anyone identify this guy. He spent a Tuesday on my boat scrapping orange slocum from dead crabs to outsmart the taugtog. And then he did, catching 4 of which 2 were keepers. Mary, Kait and I were using crabs and although they hooked 2 they both got off. We fished the 4th Island where the action was good but only for a short period starting about 1 hour before slack on the incoming tide. Before and after were dead. We saw several other NAC members catching their share. It was a beautiful spring day.

- Henry Trounter



7 April: Bert Sainz fished with me in Pretty Lake. We started slow and finally found the right area. We had some quality speckled trout. We ended up catching 12. They were all caught on MirrOlures.



4 April: I fished with my nephew Austin Glaser in Pretty Lake. We ended up with 3 puppy drum of which 1 was a keeper. All were caught on MirrOlures.

- Louis Glaser



15 April: Mary, Evy the fishing dog and I tried fishing the Pagan River in Smithfield. I thought if they were catching speckled trout and drum in the Elizabeth River, it was worth a try.

Well we didn't catch anything other then hooking Evy in the nose with a MirrOlure. Mary was hooked in her hand with the other trebels while trying to get the MirrOlure out of Evy's nose.

One lure, 2 sets of treble hooks, 2 victims at the same time each pulling in opposite directions. As bad as it sounds both hooks came completely through and I was able to cut off the barbs, so we continued fishing.

- Henry Troutner

6 April: Got an invite from Louis to fish Little Creek/Pretty Lake on an absolute beautiful day. Louis, Ike and I departed at mid-morning from Morningstar Marina (formerly Vinings Landing Marine Center) in his Carolina Skiff. We fished the falling tide using MirrOlures and set up to target the edge of the channel. Louis was first to bring in the speckled trout using a 27MR lure. We fished a slow retrieve with the sinking (52MR) and suspending (17 & 27 MR) artificial lures. The suspending lures seem to work the best during our day. In 3 hours of fishing, we brought home our three person limit and tagged and released another seven speckled trout for the Virginia Game Fish Tagging Program. Smallest fish for the day was 12.25 inches, the largest 20.50 inches, and others ranged 16-19 inches.

- Will Bransom



7 April: I went fishing for tautogs with Russell and Jerry on Russell's Mako. Winds were out of the SE at 10-15. We headed for the Cape Henry wreck first since we were just heading into the slack current from a flood tide and that is crucial for fishing at this wreck. We got on a decent piece of the wreck and started catching small 12-14 inch togs until the wind and current switched on us. So, we headed to the 4th Island of the CBBT which had less people on it than the 3rd. Russell got us on a good hook up right near the Island at the spine and we started getting one female throw back after another. All were fat with eggs. Russell caught the biggest one, an 18.5 inch one and a 17 inch but we didn't keep any of them. Russell ended up catching 7 tautogs, Jerry caught 5 and I caught 3. It was fun fishing and catching them. - Dr. James W. Ike Eisenhower



21 April: I fished solo in Pretty Lake under extremely windy conditions and ended up with 4 speckled trout and 1 bluefish. I missed several because of the bow in my line. They were caught on 52 MirrOlures. The water temperature 62 degrees and the depth was 6 feet.



17 April: I fished with my good friend Douglas Wilburn in Pretty Lake. Under windy conditions, we ended up catching 11 speckled trout using both 52MR and 27 MirrOlures. Water temperature 60 degrees and 7 feet of water.

- Louis Glaser



19 April: Mary, Evy and I were at it again. This time fishing Owl's Creek. *In 50 years of trailering a boat, I never saw a more crowded ramp. There had to be 100 boats and kayaks.* I caught a 17" speckled trout and was surprised with a 20" shad. Both were caught on Yo-Zuri Crystal Minnow Lures. Evy has learned to stay away from lures. - Henry Troutner

Virginia Printing & Signs
Division of JAMMAC Corporation



Brian A. Getz

Tel: (757) 855-5474 • Fax: (757) 855-5748

Email: virginiaprinting@aol.com

6610 E. Virginia Beach Boulevard • Norfolk, Virginia 23502



19 April: Bert and I went to Rudee for speckled trout fishing, because we heard there was a bite. Not surprising, so did everyone else. At one point, I counted 37 boats and kayaks in a 300-yard area. There were lots of specks caught and tons of bait seen on the depth finder. We fished for 5 hours and C&R 17 specks, largest was 22 inches. We used 27MR, 18s, and 52s, and rubber baits. It was a little windy. - Ned Smith



23 April: I have fished with Louis several times this month in Pretty Lake. Several times we've been skunked. I don't know really why since the water is usually between 58 degrees and 61 degrees we've fished both ebb and flood tides. This particular day was really nice, low SW winds, cloudy with really clear water in the Pretty Lake. Ebb tide, started slow but I got several bumps and a couple of fish on the hook but they got off before I could get them in. Both Louis and I each caught a 16 inch puppy drum which gave us a good fight but left us wishing they were specks. I ended up the day with two specks 17 inch and had two more hook ups to get off. The current never got very strong. All were caught on 27MR.
- Dr. James W. Ike Eisenhower

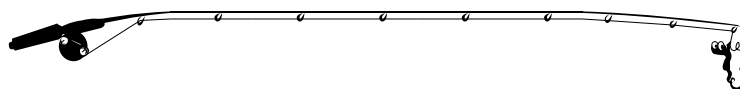


9 April: I fished with James Ike Eisenhower in Pretty Lake for 3 hours for speckled trout.



16 April: After a terrible day on Tuesday, I for 4 hours, no bites. I had decided to go solo in Pretty Lake. After an hour I finally found the speckled trout. I ended up catching 8 using 52MR & 17 Mirror Lures. The water temperature 59 degrees and the depth 5 to 9 feet.

- Louis Glaser



One bite, 1 fish. We were humbled today. That's why we keep coming back
- Louis Glaser

Chic's Beach Rental & Fishing
everything you need to enjoy the beach.....
..... & catch your dinner!!

Daily, Weekly & Monthly Beach Rentals
All Beach & House Accessories Provided
Beach Rental/Charter Fishing Packages

www.chicsbeachrentalandfishing.com
grif4408@verizon.net
follow the fishing on facebook!

Capt. Mike Griffith
USCG Licensed
757-687-9093

5 April: What a day, I fished with my nephews in Pretty Lake and found them immediately. We ended up catching 19 speckled trout with Kevin catching a 25" speck weighing 5 lbs 4 oz. We tried to revive it, but he inhaled the 17MR. We would have released it. This was my nephew's 1st speckled trout citation. All trout caught on MirrOlures.



12 April: I fished with my nephew Kevin for speckled trout in Pretty Lake. We left at 10:30am and were back by 2:00pm. We ended up with 8 nice speckled trout. They were all caught on 52MR and 27MR MirrOlures. The previous 3 trips were slow. The depth was 7 feet and water temperature was 59 degrees. - Louis Glaser



Sea Tow Services International, Inc. ©2012. All rights reserved.

**WE'RE HERE BECAUSE EVERYONE
NEEDS A FRIEND ON THE WATER**

A Sea Tow® membership saves you money where it matters the most.



Trust the local experts.
Sea Tow Hampton Roads
757-496-1999 \ 800-4-SEATOW
\$15.00 off for Angler Club Members 
Join now.



Download our FREE App!

Angler Interests

Recreational Black Sea Bass Season Opens May 29th to December 31st:



The Virginia Marine Resources Commission is extending the recreational black sea bass season in 4 VAC 20-950-45 to be open from May 29 to December 31. This closes the regular May 15 to December 31 season for 14 days to account for 14,236 pounds of black sea bass landed during the February recreational season. All other regulations pertaining to



the recreational black sea bass fishery remain in effect. This action is pursuant to the authority afforded to the Commissioner by the Governor's Executive Order 51(C) and in agreement with the Secretary of Natural Resources.

Blueline Tilefish Season opens May 1st to October 31st; Federal Permitting & Reporting Requirements for all tilefish trips being developed for Recreational Anglers



Recreational tilefish anglers may soon be subject to new permitting and reporting requirements. Under proposed regulations published by NOAA Fisheries, private recreational vessels (including for-hire operators using their vessels for non-charter, recreational trips) would be required to obtain a federal vessel permit to target or retain golden or blueline tilefish north of the Virginia/North Carolina border. These vessel operators would also be required to submit vessel trip reports (VTRs) electronically within 24 hours of returning to port for trips where tilefish were targeted or retained.



Coastal Virginia Offshore Wind Project Updates:



As of Summer 2020 approaches, onshore and offshore construction activities will near completion on the Coastal Virginia Offshore Wind pilot project!

The two, 6-megawatt turbines are scheduled to be installed 27 miles off the coast of Virginia Beach this spring. In addition to the turbines, the CVOW project calls for a power cable to bring the clean energy to land. It will be buried under the seabed for much of its length but will ultimately come ashore through a 1,000-meter conduit installed under the beach.

Construction of the project's two turbines will begin when an installation vessel arrives from Europe bearing the foundation pieces. Once work on the turbine substructures is complete, this vessel will depart to pick up additional components to install the turbines.

Installation, commissioning, and testing of CVOW's two turbines will continue during the summer once the vessel returns to the project site. Meanwhile, a group of smaller ships will oversee final preparations for the power cable – completing its trenching and burial and then connecting it to Dominion Energy's onshore infrastructure.

COASTAL VIRGINIA OFFSHORE WIND (CVOW) PILOT PROJECT UPDATE – APRIL 2020

2020 Offshore Activities

Attention Fishermen and Other Mariners

Dominion Energy will begin pre-construction activities for the Coastal Virginia Offshore Wind (CVOW) Pilot Project in April 2020. Construction activities will begin in May 2020 and continue through the Summer of 2020.

Pre-installation Cable Route Survey

Ahead of the planned export cable installation activity, a survey of the subsea cable route from shore off Camp Pendleton towards the offshore construction site will be conducted.

The vessel conducting the activities will be:

- R/V SHEARWATER - LOA 110'
 - MMSI: 368528000; Call Sign: WDF5838

The vessel will be equipped with hull mounted and towed equipment for geophysical data collection, along with additional equipment that may be deployed at specific locations to conduct geotechnical and benthic sampling. They will work on a 24hr basis, seven days a week. Please reference the Local Notice to Mariners for additional details.

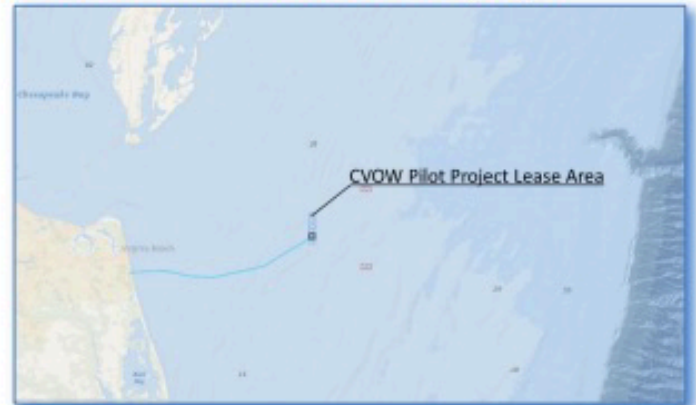
Commercial fishermen planning to deploy fixed gear (e.g., pots, gillnets, etc.) or work mobile gear in the vicinity of the planned operations should contact the Fisheries Liaisons to coordinate activities. Temporary relocation of fixed gear, away from the operational areas, may be requested.

Dominion will engage local fishing vessels as Scout Boats to help avoid any fishing gear conflicts. In the unlikely event that the survey vessel has an interaction with fishing gear, procedures are in place to notify the owner if the gear is marked. If you suspect your gear has been damaged by the survey vessel, please immediately contact the Fisheries Liaisons.

Project details and updates can be found on the Dominion Energy Coastal Virginia Offshore Wind website: <https://www.dominionenergy.com/cvow>

CVOW Pilot Project

The CVOW Pilot Project is about 24 nautical miles east of Virginia Beach in federal waters of the Atlantic Outer Continental Shelf (OCS).



Coordinates (approximated) for the cable route are given in the table below:

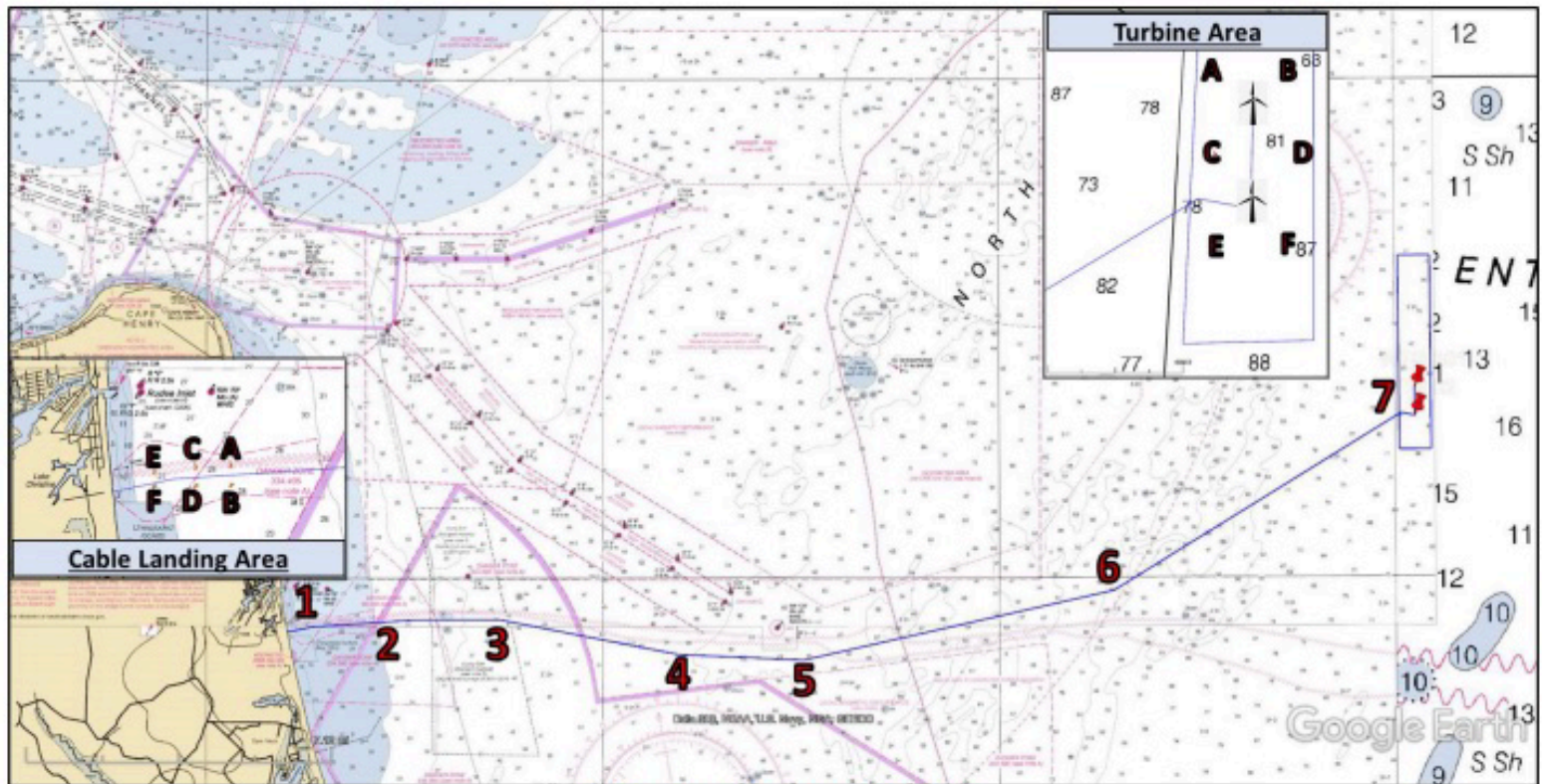
Export Cable Route WGS84 Coordinates (Deg MM.mm)			
WP	Latitude	Longitude	Depth (ft)
1	36° 49.03'N	75° 57.32'W	27
2	36° 49.16'N	75° 54.74'W	33
3	36° 49.17'N	75° 52.61'W	48
4	36° 48.47'N	75° 48.08'W	57
5	36° 48.35'N	75° 44.93'W	65
6	36° 49.73'N	75° 37.11'W	59
7	36° 53.27'N	75° 29.84'W	78

Additionally, lighted buoys have been placed to designate planned work areas near the Camp Pendleton cable landing area and the offshore area where the wind turbines will be located:

Cable Landing Area Lighted Buoys WGS84 Coordinates			
WP	Latitude	Longitude	Depth (ft)
A	36° 49.11'N	75° 56.73'W	28
B	36° 48.95'N	75° 56.72'W	28
C	36° 49.10'N	75° 57.10'W	28
D	36° 48.94'N	75° 57.10'W	28
E	36° 49.06'N	75° 57.53'W	28
F	36° 48.94'N	75° 57.53'W	28

Turbine Area Lighted Buoys WGS84 Coordinates			
WP	Latitude	Longitude	Depth (ft)
A	36° 53.96'N	75° 29.76'W	73
B	36° 53.96'N	75° 29.27'W	68
C	36° 53.49'N	75° 29.75'W	80
D	36° 53.50'N	75° 29.15'W	81
E	36° 53.02'N	75° 29.75'W	80
F	36° 53.03'N	75° 29.26'W	87

COASTAL VIRGINIA OFFSHORE WIND (CVOW) PILOT PROJECT UPDATE – APRIL 2020



NOT FOR NAVIGATIONAL USE

Survey vessels will monitor VHF Channels 16 & 13 if direct bridge-to-bridge communications are required.

R/V SHEARWATER

LOA 109'

MMSI: 368528000

Call Sign: WDF5838



Mariners transiting or fishing in the survey area are requested to give a wide berth to survey vessels which may be limited in their ability to maneuver and towing gear up to 1,000' behind the vessel. Mariners should operate in a manner that will not endanger the vessel or its equipment, a 0.5NM clearance is requested.

Fisheries Liaison Officers

Sea Risk Solutions, LLC

24-Hour Contact:

Wolfgang Rain - (206) 427-6553; wrain@searisksolutions.com

Ron Larsen - (570) 242-5023; ronlarsen@searisksolutions.com

Dominion Energy:

Scott Lawton (Environmental)

Scott.Lawton@dominionenergy.com

Lloyd Eley (Project Management)

Lloyd.J.Eley@dominionenergy.com

COASTAL VIRGINIA OFFSHORE WIND (CVOW) COMMERCIAL PROJECT SURVEY UPDATE – APRIL 2020

2020 Offshore Survey Activities

Attention Fishermen and Other Mariners:

Survey activities for the Coastal Virginia Offshore Wind Commercial (CVOW Commercial) Project will begin in April 2020.

As part of the site development process, geophysical & geotechnical surveys will be conducted over the project area and along the potential export cable corridor. Initially, there will be two (2) separate vessels conducting survey operations:

- M/V Sarah Bordelon - LOA 170'
 - MMSI: 367780870; Call Sign: WDJ4762
- M/V Marcelle Bordelon - LOA 170'
 - MMSI: 367078110; Call Sign: WDJ2038

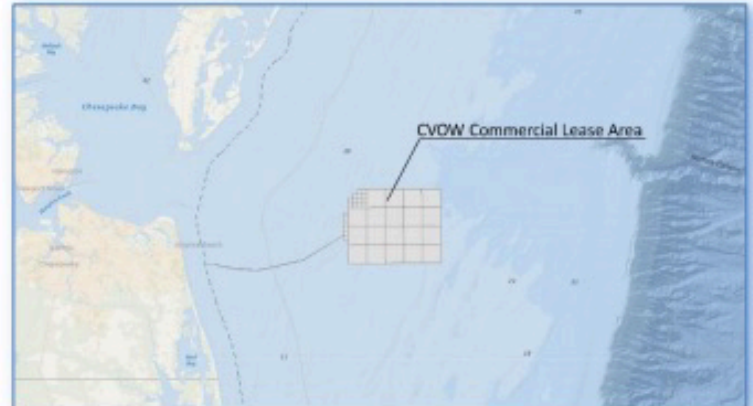
The vessels will be equipped with hull mounted and towed equipment for geophysical data collection, along with additional equipment to be deployed at specific locations to conduct geotechnical and benthic sampling. Drop down camera and video equipment will also be used as part of the benthic assessment. They will work on a 24hr basis, seven days a week. Please reference the Local Notice to Mariners for additional details regarding this work.

Commercial fishermen planning to deploy fixed gear (e.g., pots, gillnets, etc.) or work mobile gear in the vicinity of the CVOW Lease Area should contact the designated Fisheries Liaisons in order to coordinate activities. Temporary relocation of fixed gear, away from the survey area, may be requested.

Dominion will engage local fishing vessels as Scout Boats to help avoid any fishing gear conflicts. In the unlikely event that the survey vessel has an interaction with fishing gear, procedures are in place to notify the owner if the gear is marked. If you suspect your gear has been damaged by the survey vessel, please immediately contact the designated Fisheries Liaisons.

CVOW Commercial Lease Area

The CVOW Commercial Lease (OCS-A 0483) is approximately 24 nautical miles east of Virginia Beach in federal waters on the Atlantic Outer Continental Shelf (OCS).



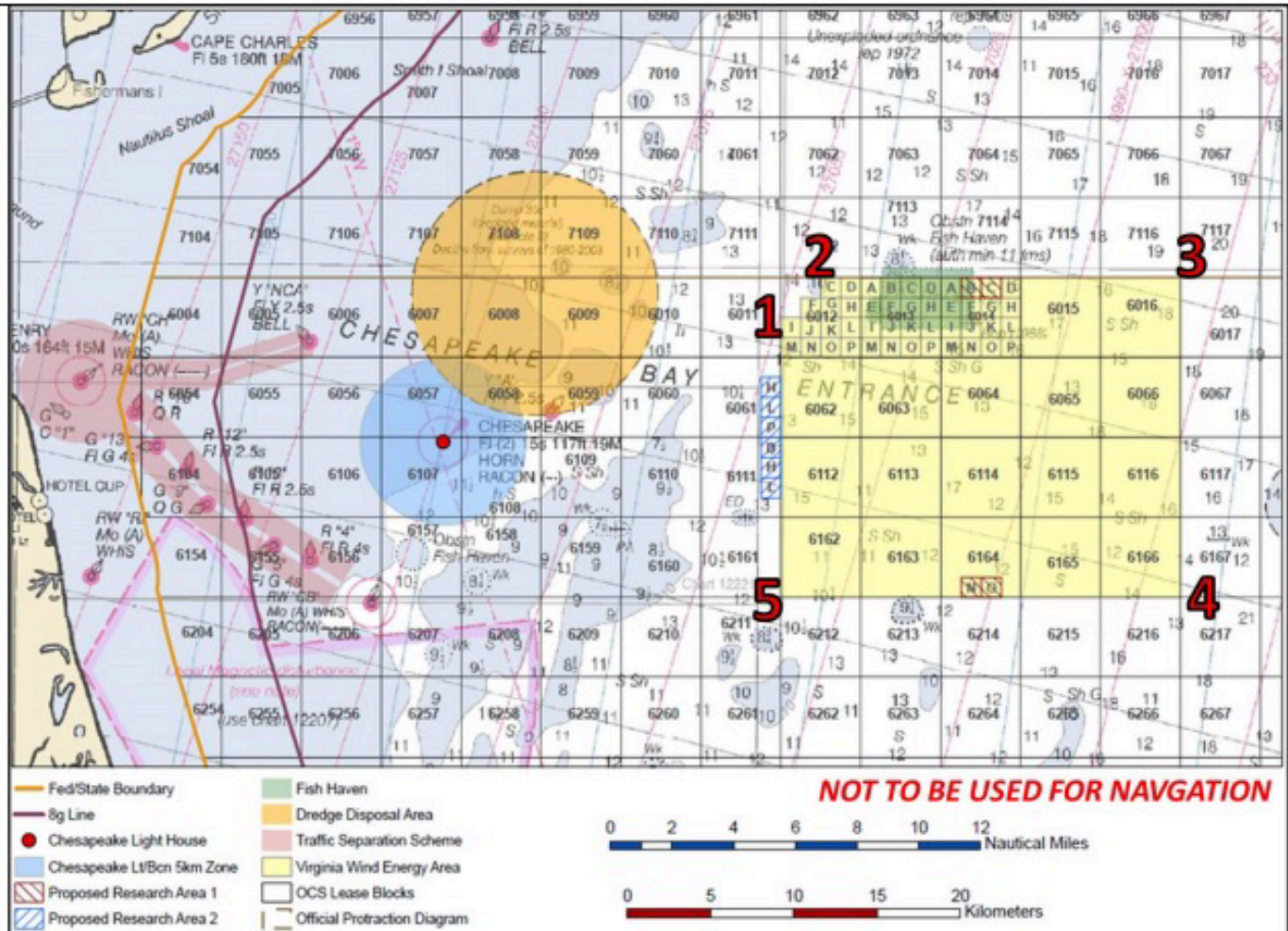
The Lease Area encompasses approximately 112,800 acres (~175 square miles) and covers depths from approximately 60' to 120'. Lease area coordinates (approximated) are given in the table below, it is suggested that mariners enter the coordinates into their navigation software.

Approximate WGS84 Coordinates (Deg MM.mm)			
WP	Latitude	Longitude	Approx. Depth (ft)
1	36° 58.39'N	75° 29.12'W	72
2	36° 59.69'N	75° 27.51'W	60
3	36° 59.73'N	75° 12.94'W	110
4	36° 49.35'N	75° 12.92'W	84
5	36° 49.30'N	75° 29.06'W	78

Project details and updates can be found on the Dominion Energy Coastal Virginia Offshore Wind website:

www.dominionenergy.com/cvow/

COASTAL VIRGINIA OFFSHORE WIND (CVOW) COMMERCIAL PROJECT SURVEY UPDATE – APRIL 2020



Survey vessels will monitor VHF Channels 16 & 13 if direct bridge-to-bridge communications are required.



SARAH BORDELON
Call Sign: WDJ4762



MARCELLE BORDELON
Call Sign: WDJ2038

Mariners transiting or fishing in the survey area are requested to give a wide berth to survey vessels which may be limited in their ability to maneuver and towing gear up to 1,000' behind the vessel. Mariners should operate in a manner that will not endanger the vessel or its equipment, a 0.5NM clearance is requested.

Fisheries Liaison Officers

Sea Risk Solutions, LLC

24-Hour Contact:

Wolfgang Rain - (206) 427-6553; wrain@searisksolutions.com

Ron Larsen - (570) 242-5023; ronlarsen@searisksolutions.com

Dominion Energy:

Scott Lawton (Environmental)

Scott.Lawton@dominionenergy.com

Lloyd Eley (Project Management)

Lloyd.J.Eley@dominionenergy.com



NAUTICAL TERM #325

fully rigged:

State of your boat once you've got a Sea Tow membership.



Sea Tow Hampton Roads

757-496-1999 \ 800-4-SEATOW \ seatow.com

\$15 off for NAC Members 

 Join now.

SEA//TOW®